

Pure Sine Wave Inverter TD Series



Smart control

Five smart control mode, auto switch for different demand



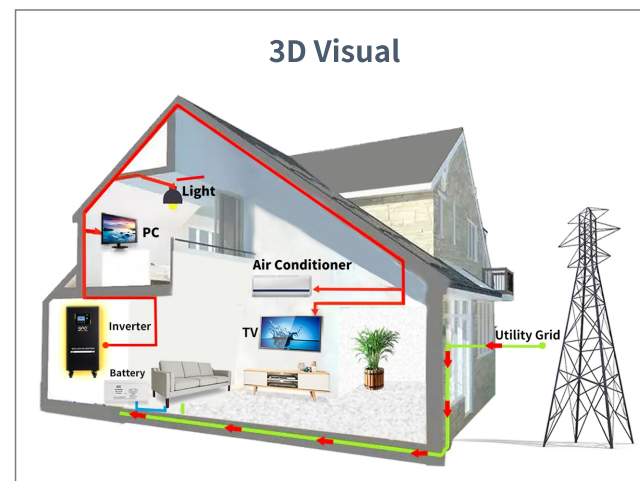
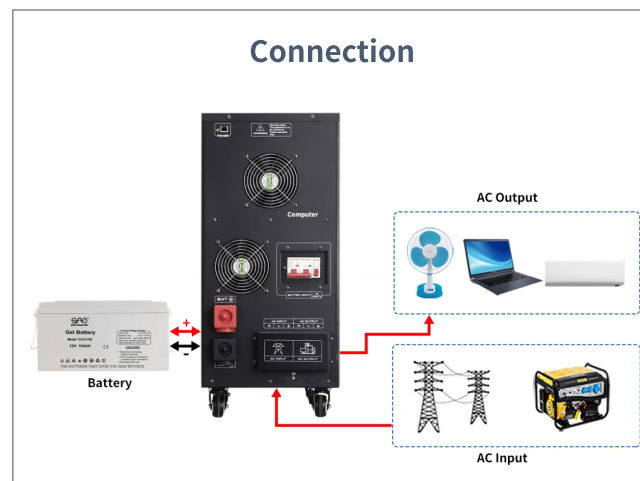
Stable & Durable

Triple surge power, stabilize power, stable and durable.



Battery Type

Support SLA/AGM/GEL/Lithium lifepo4 battery



Technical Specification

Model	TD-103	TD-153	TD-203	TD-303
Rated power	10KW	15KW	20KW	30KW
Surge power	30KW	45KW	60KW	90KW
AC Input & Output				
Voltage	220VAC			
Selectable Voltage Range	165-275VAC (220VAC)			
Frequency Range	50Hz/60Hz automatic recognition			
AC Voltage Regulation (BATT. Mode)	(DC Batt.mode)220vac ±3%			
Transfer Time	≤8ms			
Wave Form	Pure Sine Wave			
Transformer type	Toroidal			
Transfer efficiency	≥85%			
Battery				
Battery Voltage	48/96VDC	192VDC	240VDC	
Type	Gel/SLA/AGM/Water/Lithium(lifepo4) Battery			
DC Charge Voltage	40~64VDC(48V)/ 80~128VDC(96V)	160~256VDC(192V)		200~320VDC(240V)
AC Charger				
Maximum Ac Charge Current	20A			
Communication Portal				
Type	RS485			
Physical				
Dimension, D*W*H(MM)	650*410*890 (48V) 710*420*920 (96V)	750*450*1050		800*500*1100
G.W.(KGS)	82 (48V) 102 (96V)	140	148	153
Environment				
Humidity	0~95% (NO CONDESNSATION)			
Operating Temperature	0~60°C			
Storage Temperature	0~60°C			
*Product Specifications Are Subject To Change Without Further Notice				